



**CREATIVE EDUCATION TRUST**  
*Knowledge Connected*



# Train to teach

at Creative Education Trust





## About Creative Education Trust

Creative Education Trust is a non-profit educational charity recognised by the Department for Education as one of the leading multi-academy trusts in England.

Creative Education Trust was founded in 2011 by a group of successful professionals in the worlds of education, design, architecture, engineering and business who want to make a difference to children in industrial, post-industrial and coastal communities by providing them with an education that will enable them to flourish in the knowledge economy that is the world of the future. We are now a network of 17 schools across the East and West Midlands and on the East coast.

At Creative Education Trust our teacher training ethos echoes our commitment to the 13,500 children and young people in our schools: to promote creative, integrated and pro-active thinking, ready for the challenges of the 21st Century. Creative Education Trust is committed to offering trainee teachers the best opportunities to grow and learn surrounded by supportive and experienced colleagues.

### OUR SCHOOLS

**Abbeyfield School**, Northampton  
**Ash Green School**, Coventry  
**The Bulwell Academy**, Nottingham  
**Caister Academy**, Great Yarmouth  
**Ellis Guilford Academy**, Nottingham  
**Harpfield Primary Academy**, Stoke-on-Trent  
**The Hart School**, Rugeley  
**Lynn Grove Academy**, Great Yarmouth  
**The Milton Keynes Academy**, Milton Keynes  
**Queen Eleanor Primary Academy**, Northampton  
**Thistley Hough Academy**, Stoke-on-Trent  
**Three Peaks Primary Academy**, Tamworth  
**Weavers Academy**, Wellingborough  
**Woodlands Primary Academy**, Great Yarmouth  
**Wrenn School**, Wellingborough  
**Wroughton Infant Academy**, Great Yarmouth  
**Wroughton Junior Academy**, Great Yarmouth



# Teacher training at Creative Education Trust

## SCHOOL DIRECT

is a route which allows trainee teachers to select in which school they would like to complete their teacher training.

Our School Direct programme is partnered with the Ofsted 'Outstanding' University of Warwick, Centre for Teacher Education (placed 6th UK University in the Guardian University Guide 2022). The qualification gained on our School Direct programme is the same Post Graduate Certificate in Education (PGCE) as that gained by students on the more traditional University-led teacher training programme.

Courses are offered in a broad range of subjects.  
Details of our vacancies can be found at:

[www.find-postgraduate-teacher-training.service.gov.uk](http://www.find-postgraduate-teacher-training.service.gov.uk)



The following CET schools currently offer School Direct teacher training opportunities:

**Abbeyfield School**, Northampton  
**Ash Green School**, Coventry  
**The Milton Keynes Academy**, Milton Keynes  
**Weavers Academy**, Wellingborough  
**Wrenn School**, Wellingborough

If you would like to arrange a visit to one of these schools please contact:

[teachertraining@creativeeducationtrust.org.uk](mailto:teachertraining@creativeeducationtrust.org.uk)

## Course Eligibility Criteria

### QUALIFICATIONS

GCSE: 4 – 9/A-C English and Maths

Degree closely related to the subject you'd like to teach:  
Minimum 2:2, preferred 2:1 or above

Should your degree provide lesser subject specialism, candidates with Grade C or above at A Level in their chosen subject may be able to meet the eligibility criteria via a recommendation to a Subject Knowledge Enhancement course.

### ELIGIBILITY

Eligible to work in the UK

Nothing to preclude you from completing Disclosure & Barring Service (DBS) check





## SUBJECT KNOWLEDGE ENHANCEMENT (SKE) COURSES

Don't hold back from applying for teacher training due to your subject confidence – you can top up your subject knowledge with an SKE.

These courses are available if:

- your degree wasn't in your chosen subject, but is closely related
- you studied the subject at A level, but not at degree level
- you have an unrelated degree, but relevant professional experience in the subject
- it's been some time since you used your degree knowledge

The length can vary from an 8-week refresher course to 28 weeks depending on the additional specialist knowledge required to enable you to teach the subject effectively.

Full information can be found at:  
<https://getintoteaching.education.gov.uk/improve-your-subject-knowledge>

## Course Fees & Funding

Government bursary funding is available to help people who wish to train in some subjects.

You will find more information about fees and funding at:

<https://getintoteaching.education.gov.uk/funding-my-teacher-training/bursaries-and-scholarships-for-teacher-training>





## SKILLS AND QUALITIES

We look for candidates with the following strengths:

- Passion for learning and an interest in/knowledge of education
- Excellent communication skills (both written and verbal)
- Ability to stay calm and deal with stressful situations
- Drive to succeed and resilience in the face of difficulty
- Being part of a team and working collaboratively
- Reflective practitioner who responds to feedback
- ICT competent and confident
- Interests outside of education

## Teaching Apprenticeships

Creative Education Trust offer high quality post graduate teaching apprenticeships which allow trainees the opportunity to earn a salary whilst completing their training.

To be considered for a teaching apprenticeship, applicants should have at least two years' experience working in a classroom setting and be familiar with the requirements of a school environment.

For further information regarding teaching apprenticeships, please contact [teachertraining@creativeeducationtrust.org.uk](mailto:teachertraining@creativeeducationtrust.org.uk)



# Hear from our trainees

## Barbara, Wrenn School

“Education is life’s greatest gift and it’s the key to unlocking potential in people. My passion for working with young people stems from the love and care I have for them. As a mother of three, working as a teaching assistant was convenient to my busy family life. However, I felt I had more to offer hence considered teaching as a career. After deliberation I deemed it best to choose the School Direct route due to the support from the school unit, this drew me to Creative Education Trust due to their affiliation with Warwick University, the 6th best University in UK.”

“I’m privileged to gain admission into this programme, I believe it will shape my scope in the field of education, set me on the right track, grant me confidence and the relevant skills as well as afford me the opportunity to impact and bring a change in young people’s lives.”

## Gratia, Weavers Academy

“Young people, especially teenagers can be quite challenging, and yet I found myself making the decision to get into a profession where I interact with them lot; furthermore, teaching a subject which is not a favourite of many!!! The combination of the negative attitude towards mathematics, my love for it, shortage of teachers for it, and appreciation of the doors it opens to many, led me to teaching. I am a curious person who likes to know a lot about a lot and to pass it on, therefore, teaching is an obvious profession for me to have a platform to do this. I chose the School Direct route because I have previously worked unqualified in different schools and knew that Weavers had a Maths department that was very well-organised and I knew would afford me great training; with an added bonus of affiliation with a highly reputable university. I aspire to participate in pastoral roles as my career progresses.”

## Marsha, Wrenn School

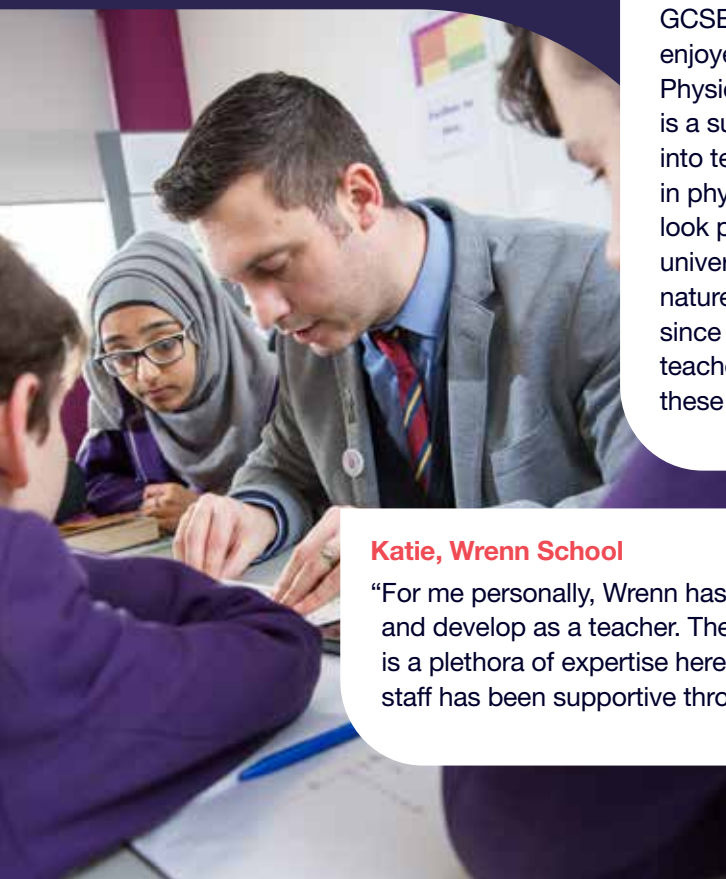
“Excellent support from, not only the department, but from the whole school. Immediately invited into the Wrenn family – invitations for CPD, team development, cook-along on a Friday. Genuine care for everyone’s well-being; staff and students.”

## Jack, Abbeyfield School

“I’ve always enjoyed learning about physics and the nature of the universe, but as I progressed through my studies from GCSEs all the way to degree level, I found that what I truly enjoyed was discussing and explaining physics to my peers. Physics can be and often is extremely dry and boring, but it is a subject that is deep, rich, perhaps even romantic. I went into teaching since I wanted to help students find the beauty in physics, by pointing them in the right directions to look. To look past the individual concepts and equations and see the universality of the subject, the intrinsic value of the study of the nature of the universe. I opted for a school direct programme since I felt I could build better relationships with students and teachers with a longer placement, which should help me further these goals.”

## Katie, Wrenn School

“For me personally, Wrenn has been an excellent place to learn and develop as a teacher. The prospect is daunting, but there is a plethora of expertise here and every single member of staff has been supportive throughout my time here.”



# Hear from our Principals



## ASH GREEN SCHOOL COVENTRY

"At Ash Green School, we are exceptionally proud of unlocking the academic talent that is found within our students and strongly believe each individual will thrive in our high-achieving environment. We provide the very best opportunities for everyone to excel and nurture all the fantastic qualities that are not materialistic or target driven. Success for us is measured by sending out happy, confident and independent young people who are ready for the challenges of university and the world of work."

**Umbar Sharif, Principal**

## ABBNEYFIELD SCHOOL NORTHAMPTON

"Abbeyfield School is committed to providing a high quality, memorable learning experience for our students. Our aim is to provide a rich, engaging curriculum within the classroom alongside extension and enrichment activities. There is a shared commitment to supporting, inspiring and challenging every young person in order for them to achieve their personal best in terms of academic outcomes. Of equal value is the students' personal and social development, equipping them with the life and employability skills needed for successful adulthood. A recognition that a healthy mind and body is essential underpins our planning and provision. High expectations and positive relationships permeate all aspects of school life. A calm, purposeful environment built around our core values provides the opportunity for all to succeed."

**Siona Robson, Principal**



## MILTON KEYNES ACADEMY MILTON KEYNES

"At MKA, we firmly believe that our young people should be given every opportunity to achieve beyond their potential. Each one of our students is unique and is recognised as an individual. It is our responsibility to celebrate this and provide them with the skills and ability that prepare them to be successful in the future. Every student at MKA today is a potential leader for the future."

**Gordon Farquhar, Principal**

## WEAVERS ACADEMY WELLINGBOROUGH

"Weavers is large enough to offer a very broad range of opportunities within its innovative, comprehensive curriculum while small enough to provide the level of care required to ensure all students feel safe, valued and happy.

We know that the quality of teaching and learning is the single biggest factor in shaping how well students do at school and it is for this reason that we have placed it at the centre of the school's work."

**Vivien Swaida, Principal**



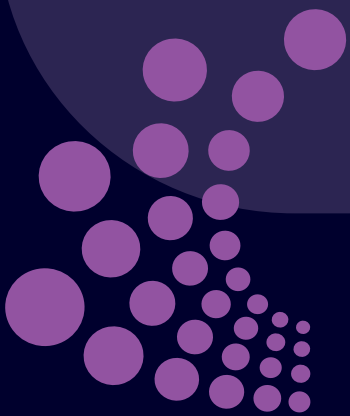
## WRENN SCHOOL, WELLINGBOROUGH

"I am very proud of our school and, most importantly, of the students and staff with whom I have the pleasure of spending each day.

At Wrenn School, we believe that our first priority is to provide the best care and guidance to help our children learn. We place this at the heart of every decision we make and continually ask ourselves: will this improve student learning?

At Wrenn School we are proud of the progress our students make. We believe that all students can make outstanding progress and attain at the highest level, whatever their starting point."

**Marianne Blake, Principal**





**Creative Education Trust**

Sicilian House  
7 Sicilian Avenue  
London WC1A 2QR  
Telephone 020 3910 9200

[info@creativeeducationtrust.org.uk](mailto:info@creativeeducationtrust.org.uk)



To discuss teacher training opportunities at Creative Education Trust please contact Claire Amed, Teacher Training Co-ordinator, on 07842 314726, email [teachertraining@creativeeducationtrust.org.uk](mailto:teachertraining@creativeeducationtrust.org.uk) or visit our website [www.creativeeducationtrust.org.uk/teachertraining](http://www.creativeeducationtrust.org.uk/teachertraining)

Or apply online here:  
[www.find-postgraduate-teacher-training.service.gov.uk](http://www.find-postgraduate-teacher-training.service.gov.uk)

Provider code 5A1